



CCL Healthcare offers a broad scope of security solutions for many different applications including overt and covert features for tamper evidence. Protecting drugs or medicine with tamper evident seals, bands, or labels is a critical safety measure in preventing the product from being altered, diluted, or replaced with a fake product. With a Tamper Evident Solution, it ensures a last level of defense for the consumers by indicating if the package or bottle has been tampered with or opened.

Tamper Evident Label

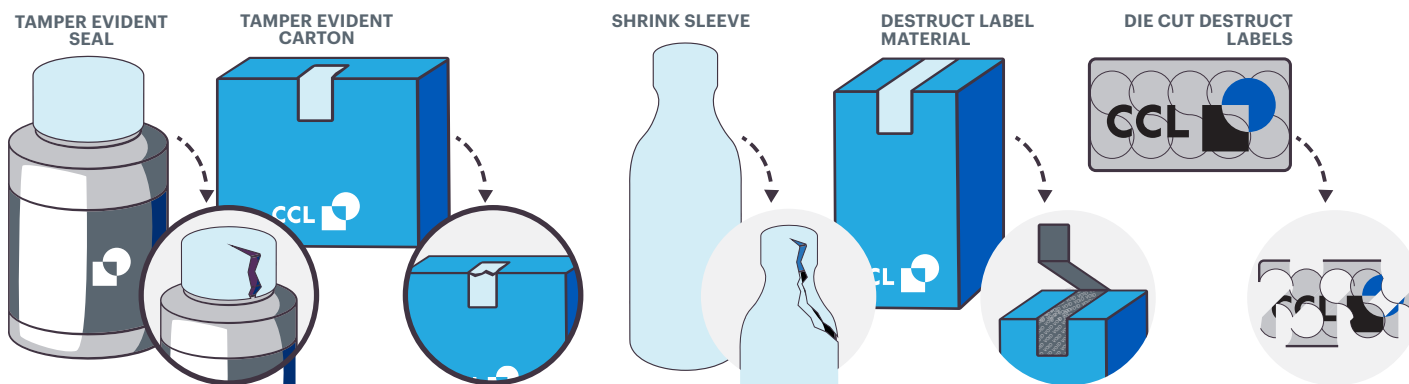
Tamper Evident labels are a safety feature that is applied to caps, openings, or over the entire package to secure the product from tampering. Various brand security options and combinations of features can be added from void labels, destruct labels, and NFC tamper labels.

Tamper Evident Carton Label

Tamper Evident carton labels have a break in the adhesive where when the carton is opened the label will break and show tampering. Various brand security options and combinations of features can be added from void labels, destruct labels, and NFC tamper labels.

Full body Shrink Sleeve and Neckbands

Shrink Sleeves and neckbands are adaptable and flexible options for containers made of plastic, glass, and metal. Shrink Sleeve tamper evident solutions are applied to packaging to indicate if the product has been compromised.



Security features include but not limited to:

- Taggants
- Color Shift Ink
- Thermochromic Ink
- Coin Reactive Ink
- Invisible Codes
- Micro Text
- Holograms
- Luminescent Ink
- Serialized Codes
- Metachromic Ink
- Mobile Authenticators
- NFC Tamper Tag